

Quaking Aspen

Populus tremuloides



Mature



Native Range

General Attributes

Type	Deciduous Tree
Height	35 - 60 Feet
Spread	20 - 30 Feet
Form	Columnar
Utility Lines	Incompatible
Growth Rate	Fast
Life Expectancy	Short
USDA Zone	2 - 6
Root Pattern	Shallow Lateral

Plant Community

Sun	Full Sun
Orientation	North, East
Soil Texture	Sand to Clay
Topography	Upland
Plant Community	Forest, Savannah, Forest Edge, Old Field
Succession	Pioneer
Origin	MSA Zone 1, MSA Zone 2, MSA Zone 3, MSA Zone 4, MSA Zone 5, MSA Zone 6, Minnesota, North America

Flowers/Foliage/Fruits

Flower Color	Gray
Flower Season	Spring
Fruit	Capsule
Fruit Color	
Fruit Season	Spring
Summer Texture	Medium
Winter Texture	Medium
Spring Foliage	Green
Summer Foliage	Green
Fall Foliage	Yellow
Winter Foliage	Not Applicable

Soils

Salt Spray Tolerance	Moderate
Soil Salt Tolerance	Tolerant
Compaction Tolerance	Tolerant
Water Table	12 Inches
Drainage	Excessive, Moderate
Flood Tolerance	
Drought Tolerance	
Moisture Regime	Dry, Moist, Wet
pH	4.8 through 7.5
Windbreak Group	

Quaking Aspen

Populus tremuloides



Planting Ease

Spring Bareroot	Easy
Fall Bareroot	Easy
Spring Container	Easy
Fall Container	Easy
Spring Seed	
Fall Seed	

Maintenance

Formal	Moderate
Informal	Low
2,4-D Tolerance	Sensitive
Dicamba Tolerance	Sensitive
Picloram Tolerance	Sensitive
Clopyralid Tolerance	
Artificial Light	Sensitive
Sulfur Dioxide	Sensitive
Ozone Tolerance	Sensitive
Hydrogen Flouride	Moderate
Nitrogen Oxide	

Pests/Problems

Allergens	males 9, females 1
Invasiveness	Invasive
Toxicity	
Cold Injury	Not Susceptible
Storm Damage	Susceptible
Biological Control	
Mechanical Control	
Chemical Control	

Miscellaneous

Wildlife Rating	High
Insect Concerns	Major
Disease Concern	Major
Wildlife Concerns	

Comments

Native species that reseeds itself after forest fires. Wood used for paper pulp and furniture; bark favored by beavers. Good in naturalistic plantings. Plant named because leaves quake in wind. Bark greenish to white. Subject to canker.



Bark



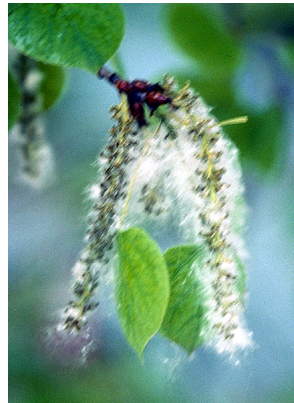
Fall

Quaking Aspen

Populus tremuloides



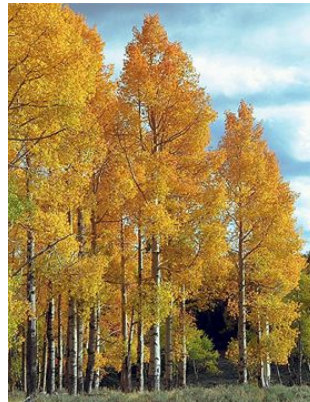
Flower



Fruit



Leaf



Mass