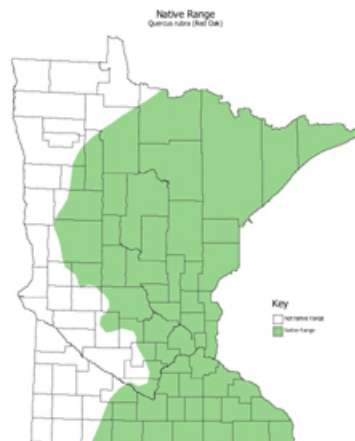


# Northern Red Oak

*Quercus rubra*



Mature



Native Range

## General Attributes

Type	Deciduous Tree
Height	60 - 80 Feet
Spread	40 - 50 Feet
Form	Rounded
Utility Lines	Incompatible
Growth Rate	Medium
Life Expectancy	Long
USDA Zone	3 - 8
Root Pattern	Deep Lateral

## Flowers/Foliage/Fruits

Flower Color	Brown
Flower Season	Spring
Fruit	Nut
Fruit Color	Light Brown
Fruit Season	Fall
Summer Texture	Medium
Winter Texture	Medium
Spring Foliage	Green
Summer Foliage	Green
Fall Foliage	Red
Winter Foliage	Bronze

## Plant Community

Sun	Full Sun, Partial Sun
Orientation	North, East
Soil Texture	Sandy Loam to Clay
Topography	Upland
Plant Community	Forest
Succession	Climax
Origin	MSA Zone 1, MSA Zone 2, MSA Zone 3, MSA Zone 4, MSA Zone 6, Minnesota, North America

## Soils

Salt Spray Tolerance	Sensitive
Soil Salt Tolerance	Moderate
Compaction Tolerance	Moderate
Water Table	30 Inches
Drainage	Moderate
Flood Tolerance	
Drought Tolerance	Sensitive
Moisture Regime	Moist, Wet
pH	4.0 through 6.5
Windbreak Group	

# Northern Red Oak

*Quercus rubra*



## Planting Ease

Spring Bareroot

Fall Bareroot

Spring Container

Easy

Fall Container

Easy

Spring Seed

Fall Seed

## Maintenance

Formal

Moderate

Informal

Low

2,4-D Tolerance

Sensitive

Dicamba Tolerance

Sensitive

Picloram Tolerance

Sensitive

Clopyralid Tolerance

Artificial Light

Sulfur Dioxide

Tolerant

Ozone Tolerance

Tolerant

Hydrogen Flouride

Moderate

Nitrogen Oxide

Tolerant

## Pests/Problems

Allergens

males 8, females 8

Invasiveness

Non-Invasive

Toxicity

Has toxic Stems, Leaves

Cold Injury

Not Susceptible

Storm Damage

Not Susceptible

Biological Control

Mechanical Control

Chemical Control

## Miscellaneous

Wildlife Rating

High

Insect Concerns

Major

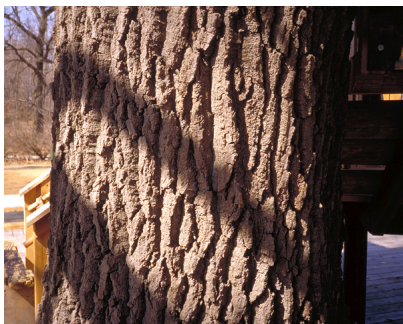
Disease Concern

Minor

Wildlife Concerns

## Comments

Susceptible to oak wilt. Withstands city conditions. Will develop chlorosis in high PH soils. Leaves persist into winter. Bare root plants require sweating; not recommended for fall planting. Toxicity reported with browsing livestock.



Bark



Dormant

# Northern Red Oak

*Quercus rubra*



Fall



Flower



Fruit



Immature



Leaf