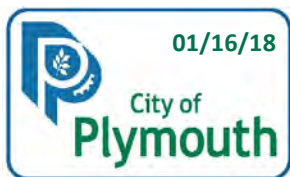
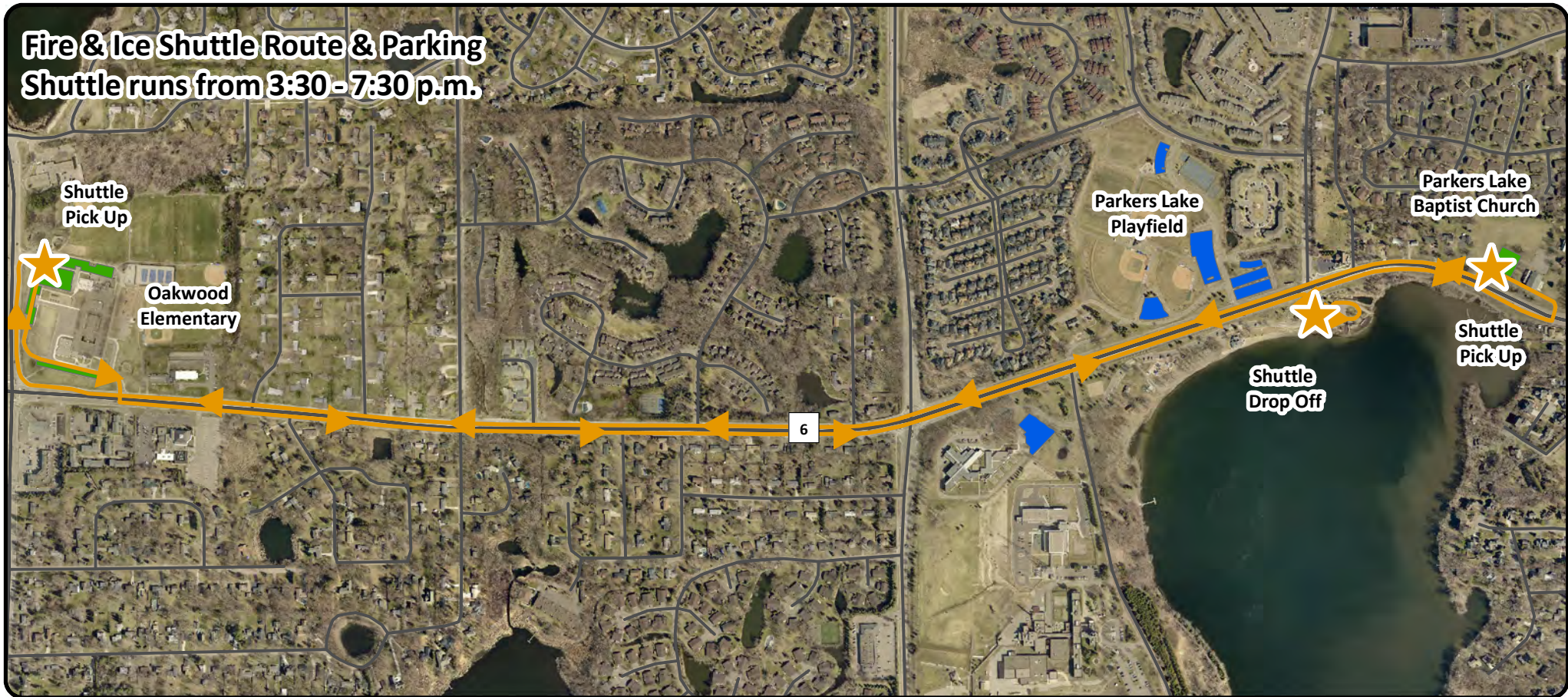


Fire & Ice Shuttle Route & Parking

Shuttle runs from 3:30 - 7:30 p.m.



**Fire & Ice
Shuttle Route & Parking
February 3, 2018**

Legend

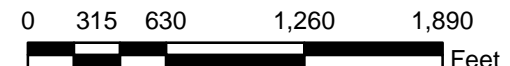


Parking

Shuttle Parking



Shuttle Route



THIS REPRESENTS A COMPILATION OF INFORMATION AND DATA FROM CITY, COUNTY, STATE AND OTHER SOURCES THAT HAS NOT BEEN FIELD VERIFIED. INFORMATION SHOULD BE FIELD VERIFIED AND COMPARED WITH ORIGINAL SOURCE DOCUMENTS.