

Segment Six

Segment Six connects the trail developed during Phase One with the trail extending east from Juneau Lane. This trail segment includes two boardwalks to carry the trail over a wetland complex. A rest stop will provide a bench and a bike rack for trail users. In addition to the new trail constructed as part of this segment, 200 feet of existing eight-foot trail on the north side will be widened and re-paved to twelve-feet wide. Improvements will include pedestrian crossing elements at the Juneau Lane and 57th Avenue intersection.

Segment Six Length: 0.37miles

12-Foot Trail: 0.37 miles

8-Foot Trail: N/A

Structures & Amenities:

253-foot boardwalk

260-foot boardwalk

Class D rest stop

Construction Year: 2025

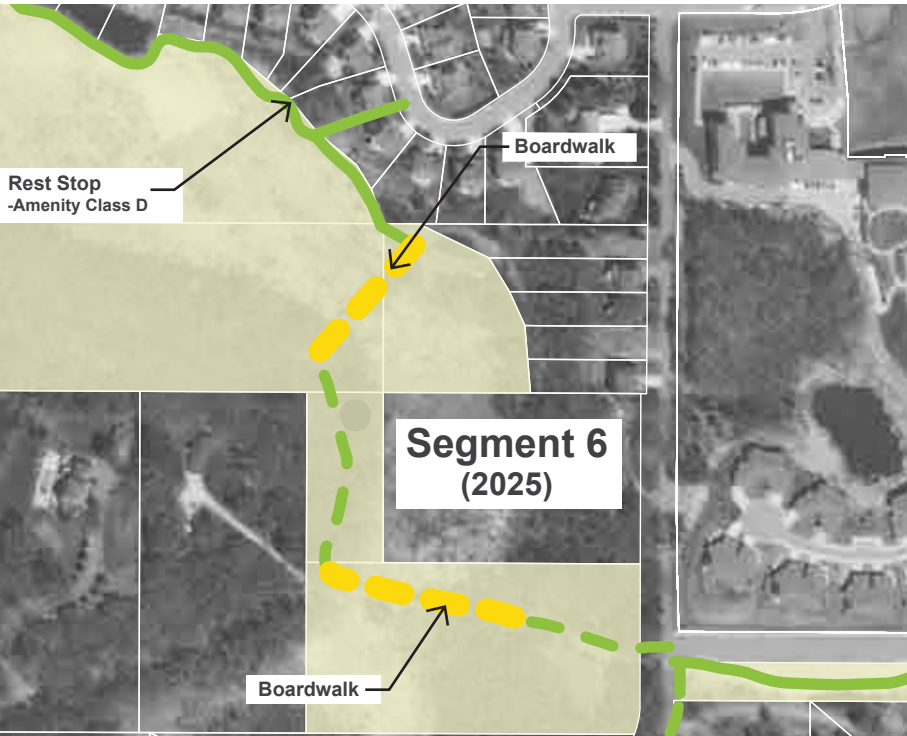


Figure 6: Segment Six