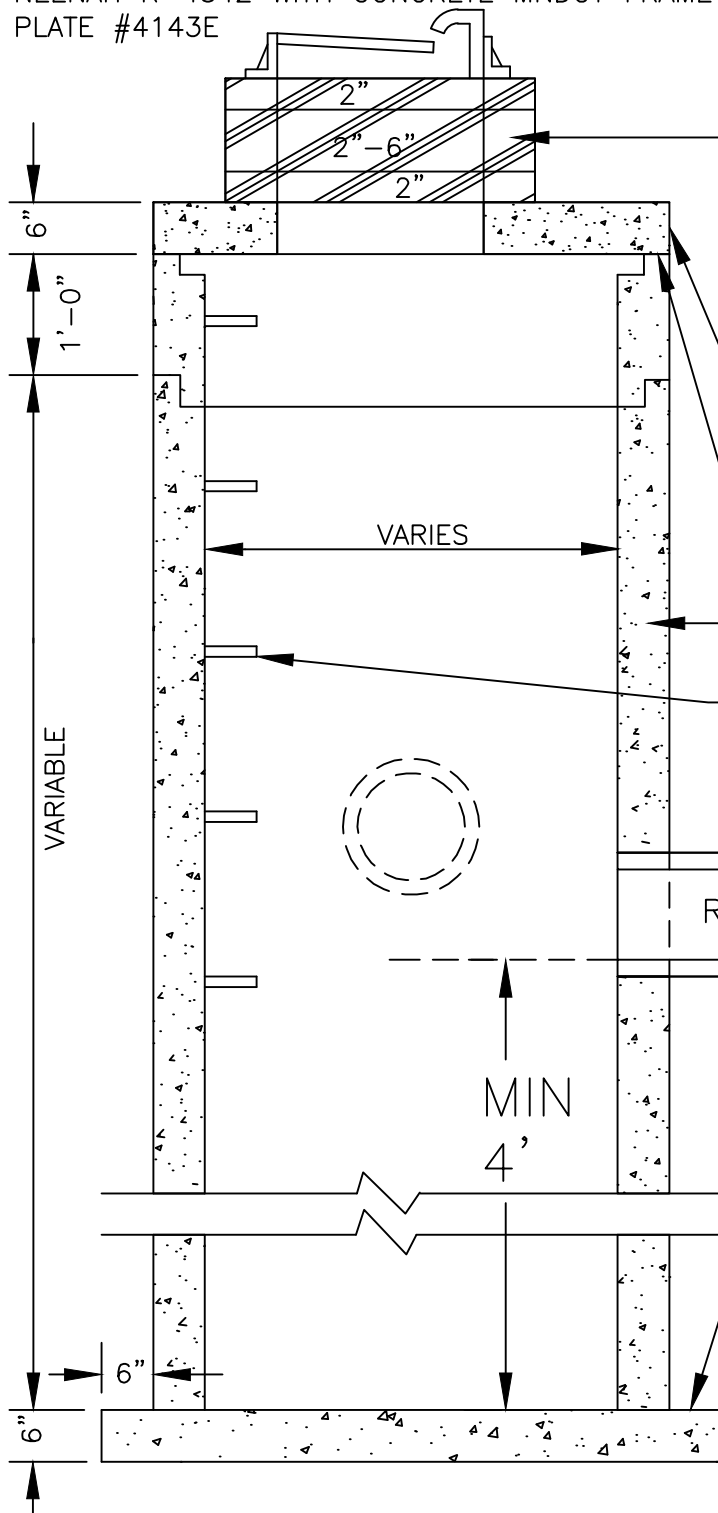


NEENAH R-2561-A BEEHIVE GRATE & CASTING  
NEENAH R-2573 CONCAVE GRATE & CASTING  
NEENAH R-2577 CONVEX GRATE & CASTING  
NEENAH R-3250-1 GRATE & CASTING  
NEENAH R-3290-A FOR CROSS GUTTERS  
NEENAH R-3501-TR & TL FOR SURMOUNTABLE  
CURB  
NEENAH R-4342 WITH CONCRETE MNDOT FRAME  
PLATE #4143E

- 6" MINIMUM PRECAST REINFORCED CONCRETE SLAB.
- RAMNEK OR SIMILAR GASKET TYPE MATERIAL TO BE PLACED BETWEEN SLAB AND TOP OF MANHOLE SECTION.

MANHOLE STEPS NEENAH R-1981-J PLASTIC  
COATED OR APPROVED EQUAL, 16" ON  
CENTER

-BOTH BASE SLAB AND TOP SLAB VARIES IN THICKNESS, (6"MINIMUM-12"MAXIMUM) DEPENDING UPON STRUCTURE DIAMETER AND DEPTH. FOLLOW MANUFACTURES SPECIFICATIONS.



PUBLISHED  
3-25

CITY PL. NO.  
ST-11  
REVISED 1-21