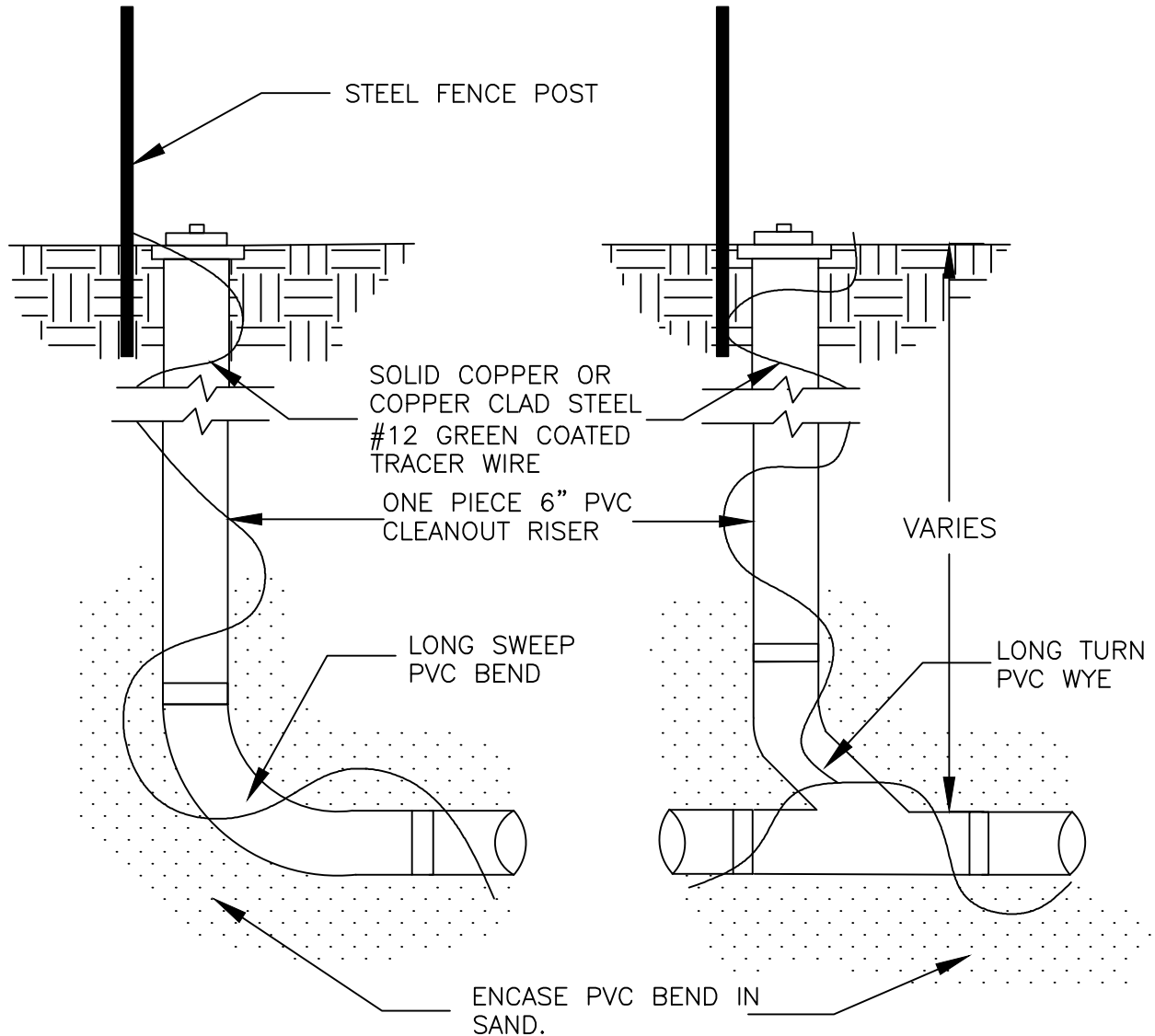


NOTE:

- 6" HUB WITH THREADED PVC CAP, DO NOT GLUE
- COVER WITH FORD METER BOX A-1 CASTING OR APPROVED EQUAL. SET COVER FLUSH WITH FINISHED GRADE AND PLACE TEMPORARY STEEL FENCE POST NEXT TO EACH CLEAN OUT
- TERMINATE #12 GREEN COATED TRACER WIRE UNDER THE METER BOX CASTING AND INSIDE THE CATCH BASINS ON THE REAR GRATE SUPPORT
- INSTALL STEEL FENCE POST BEHIND EACH CLEANOUT
- ENCLOSE LONG SWEEP BEND OR WYE IN AGGREGATE MATERIAL AS SHOWN
- BENDS SHALL NOT BE GREATER THAN 22 ½ DEGREES
- FLEXIBLE 6" DRAIN TILE MAY BE USED IN CUL-DE-SACS



END OF  
LINE  
CLEANOUT

IN LINE  
CLEANOUT

INSTALL CLEANOUTS EVERY 100' TO 125'. CONNECT STREET DRAINTILE CB TO CB WHERE PRACTICAL.



STANDARD DETAILS  
PVC STREET DRAIN TILE CLEANOUTS  
CITY OF PLYMOUTH

PUBLISHED  
3-25

CITY PL. NO.  
ST-18  
REVISED 3-25