

NOTE: 24"X36" SLAB OPENING FOR NEENAH R-3067-V OR -VB CASTING AND GRATE.

OTHER POTENTIALLY ACCEPTABLE CATCH BASIN CASTINGS DEPENDING UPON CIRCUMSTANCES AND SUBJECT TO CITY APPROVAL:

NEENAH R-2561-A BEEHIVE GRATE & CASTING  
 NEENAH R-2573 CONCAVE GRATE & CASTING  
 NEENAH R-2577 CONVEX GRATE & CASTING  
 NEENAH R-3250-1 GRATE & CASTING  
 NEENAH R-3290-A FOR CROSS GUTTERS  
 NEENAH R-3501-TR & TL FOR SURMOUNTABLE CURB  
 NEENAH R-4342 WITH CONCRETE MNDOT FRAME PLATE #4143E

DIMENSION FROM BACK OF CURB TO CENTER OF PIPE.

4' DIA. M.H.-9" IN FROM BACK OF CURB  
 6' DIA. M.H.-3" BEHIND BACK OF CURB  
 8' DIA. M.H.-15 BEHIND BACK OF CURB

VARIABLE THICKNESS HDPE ADJUSTING RINGS AS REQUIRED. MINIMUM OF 4" ADJUSTMENT AND MAXIMUM OF 12" ADJUSTMENT. USE LARGER ADJUSTMENT RINGS TO MINIMIZE THE NUMBER OF JOINTS. INCLUDE MIN. 1-2" RING IMMEDIATELY UNDER THE CASTING. THERE CAN BE NO MORE THAN 3" OF OFFSET IN ANY DIRECTION IN THE ADJUSTING RING PLACEMENT. USE TAPERED RINGS TO MATCH CASTING TO STREET GRADE. APPLY BUTYL SEALANT BETWEEN THE FIRST RING AND THE STRUCTURE AND BETWEEN THE UPPER RING AND THE CASTING. DON'T APPLY SEALANT TO THE MIDDLE JOINTS. WRAP THE OUTSIDE OF THE RINGS WITH A NON-WOVEN GEOTEXTILE FABRIC.

RAMNEK OR SIMILAR GASKET TYPE MATERIAL TO BE PLACED BETWEEN SLAB AND TOP OF MANHOLE SECTION.

ALL MANHOLE JOINTS TO HAVE RUBBER GASKETS.

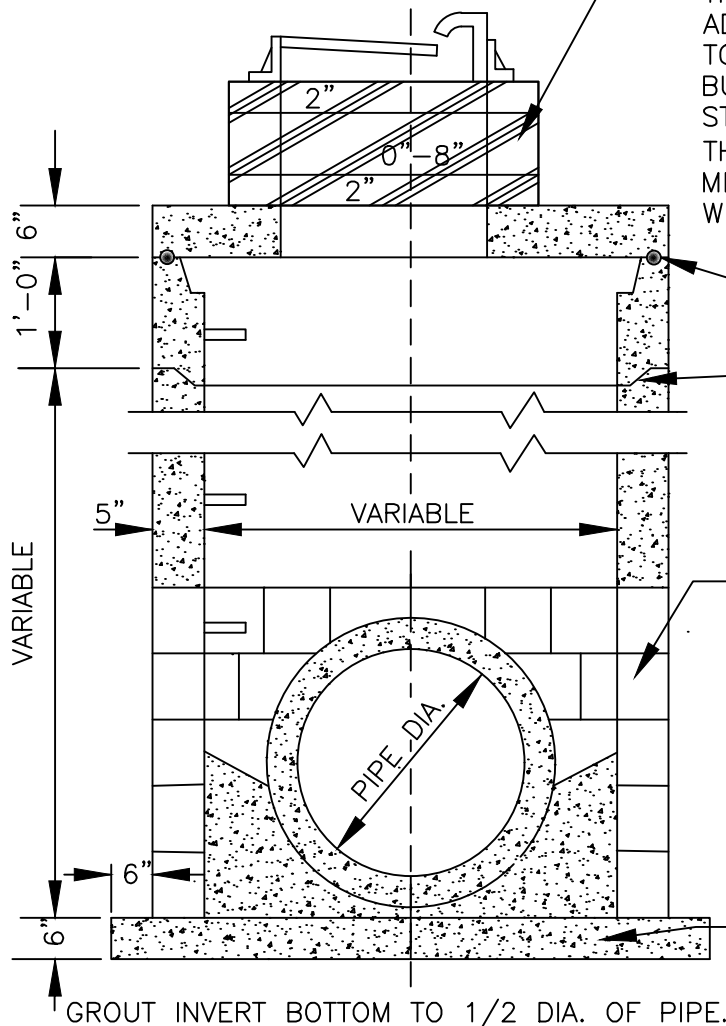
MANHOLE STEPS NEENAH R1981J PLASTIC COATED OR APPROVED EQUAL, 16" O.C.

USE PRECAST SECTIONS WHENEVER POSSIBLE WITH APPROVAL: 8" PRECAST CONCRETE BLOCK TO TOP OF THE PIPE, WITH PRECAST MANHOLE SECTION ABOVE TOP OF PIPE, PLASTER INTERIOR, EXTERIOR AND ALL GAPS IN CONCRETE BLOCK WITH FLEX SEAL OR APPROVED EQUAL.

USE MIN. 4' DIAMETER MANHOLE SECTIONS FOR PIPE SIZES UP TO 36" DIAMETER.

DOGHOUSES SHALL BE GROUTED ON BOTH THE OUTSIDE AND INSIDE.

BOTH BASE SLAB AND TOP SLAB VARIES IN THICKNESS, (6"MINIMUM-12"MAXIMUM) DEPENDING UPON STRUCTURE DIAMETER AND DEPTH. FOLLOW MANUFACTURES SPECIFICATIONS.



STANDARD DETAILS  
 BLOCK STORM SEWER CATCH BASIN MANHOLE  
 WITH REINFORCED CONCRETE TOP SLAB  
 CITY OF PLYMOUTH

PUBLISHED  
 3-25

CITY PL. NO.  
 ST-7  
 REVISED 1-21