

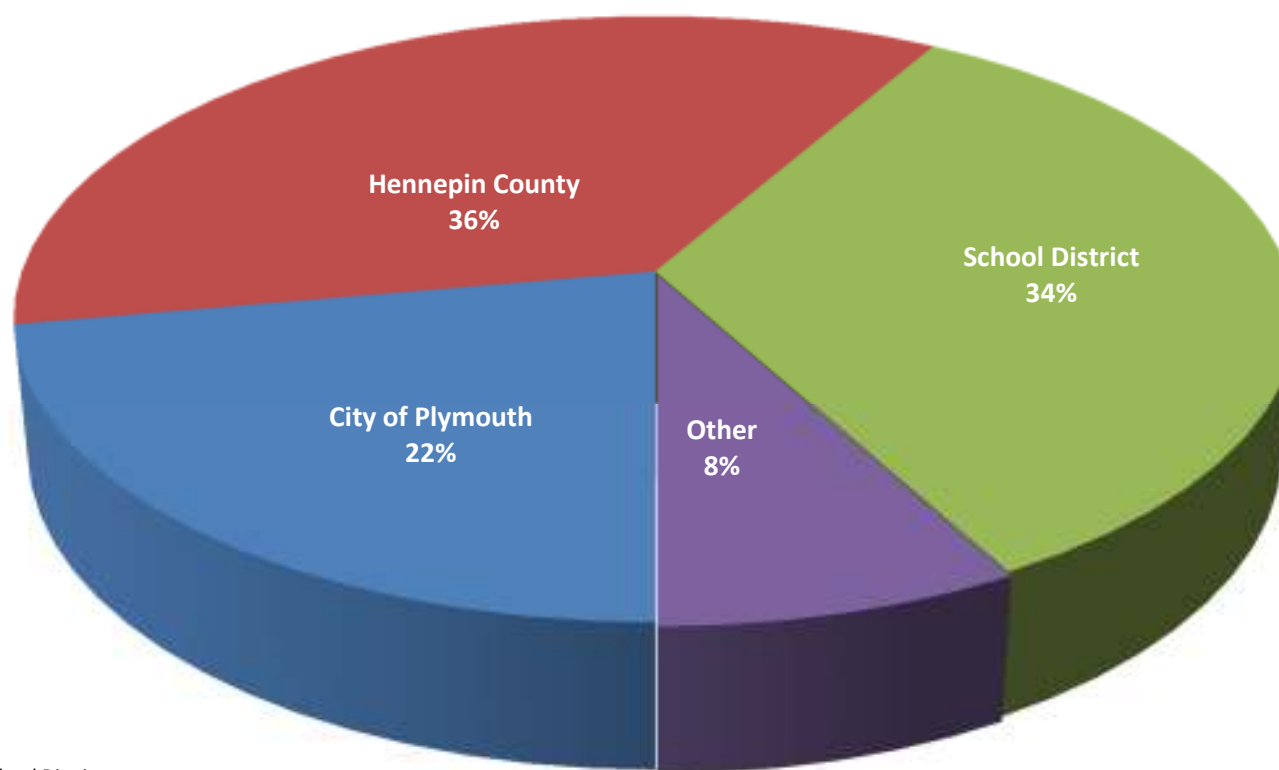


# Financial Overview

May 28, 2012

## Property Tax Dollar - 2013

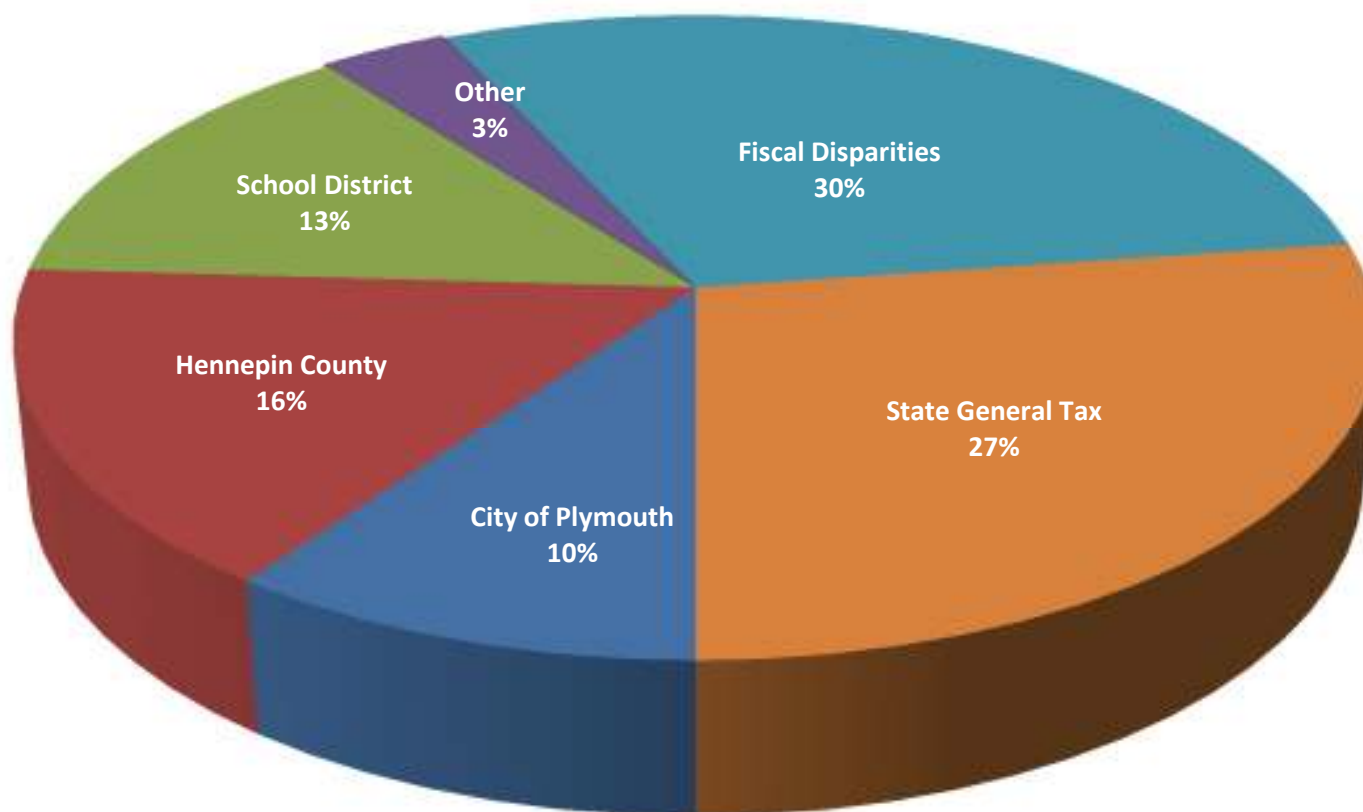
Residential Homesteaded Property



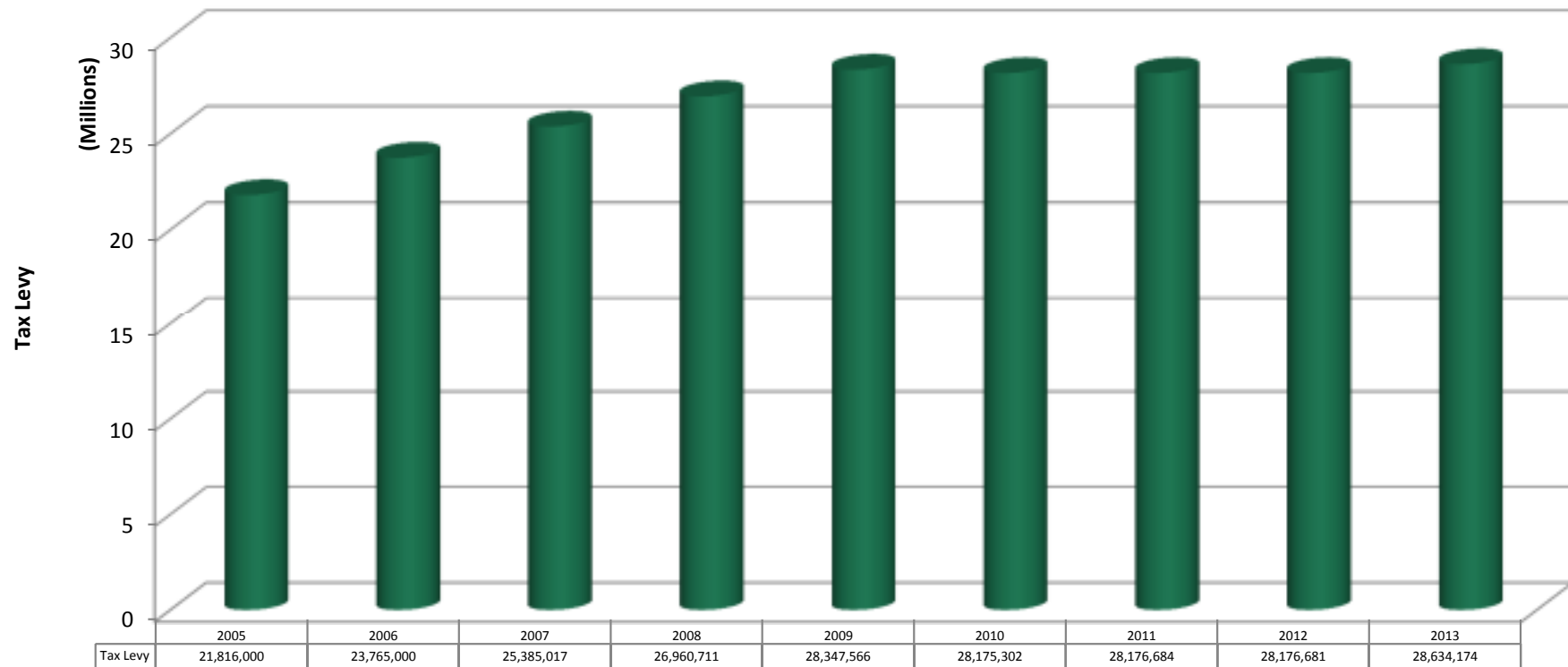
Wayzata School District  
Bassett Creek Watershed

## Property Tax Dollar - 2013

Commercial/Industrial Property

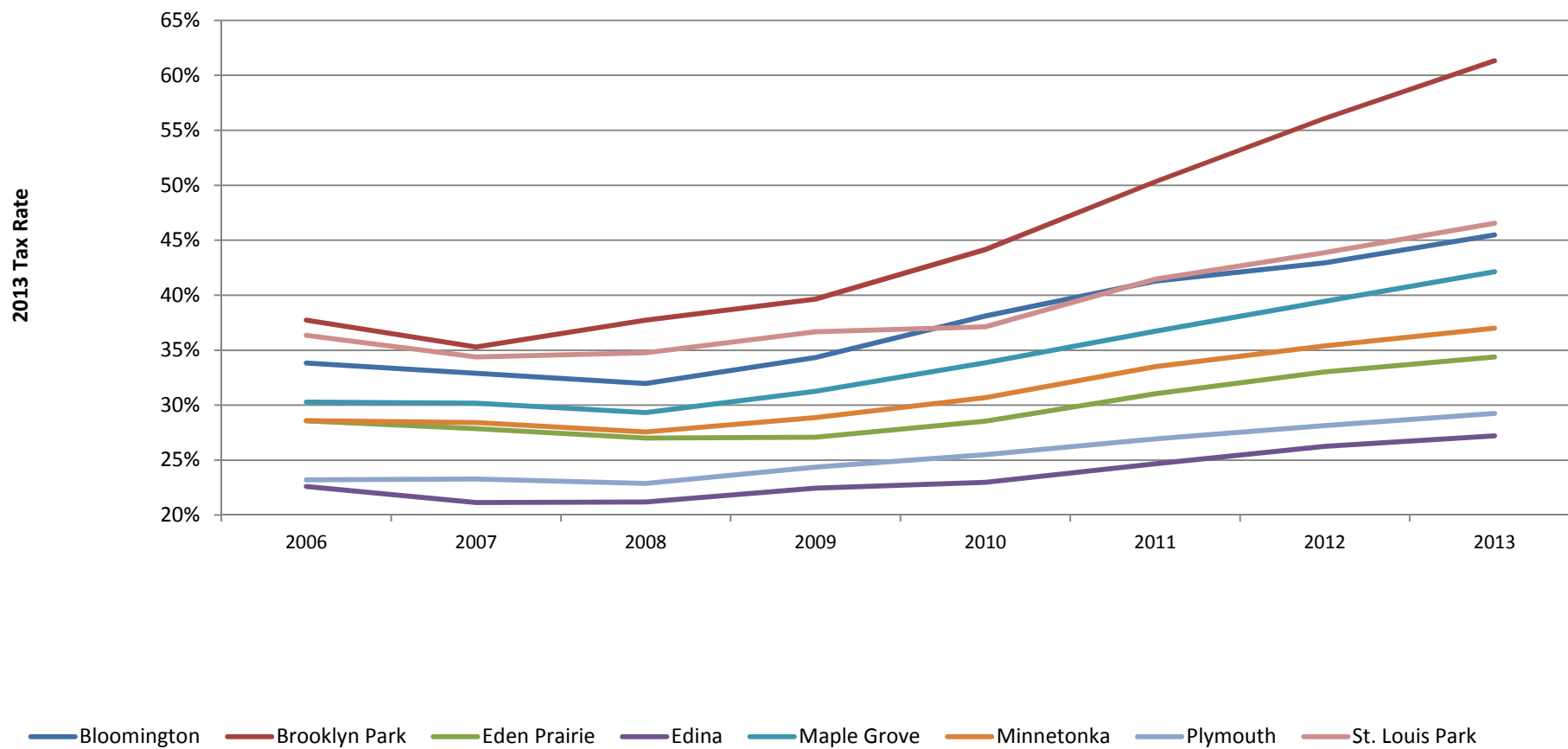


## Tax Levy History 2005-2013

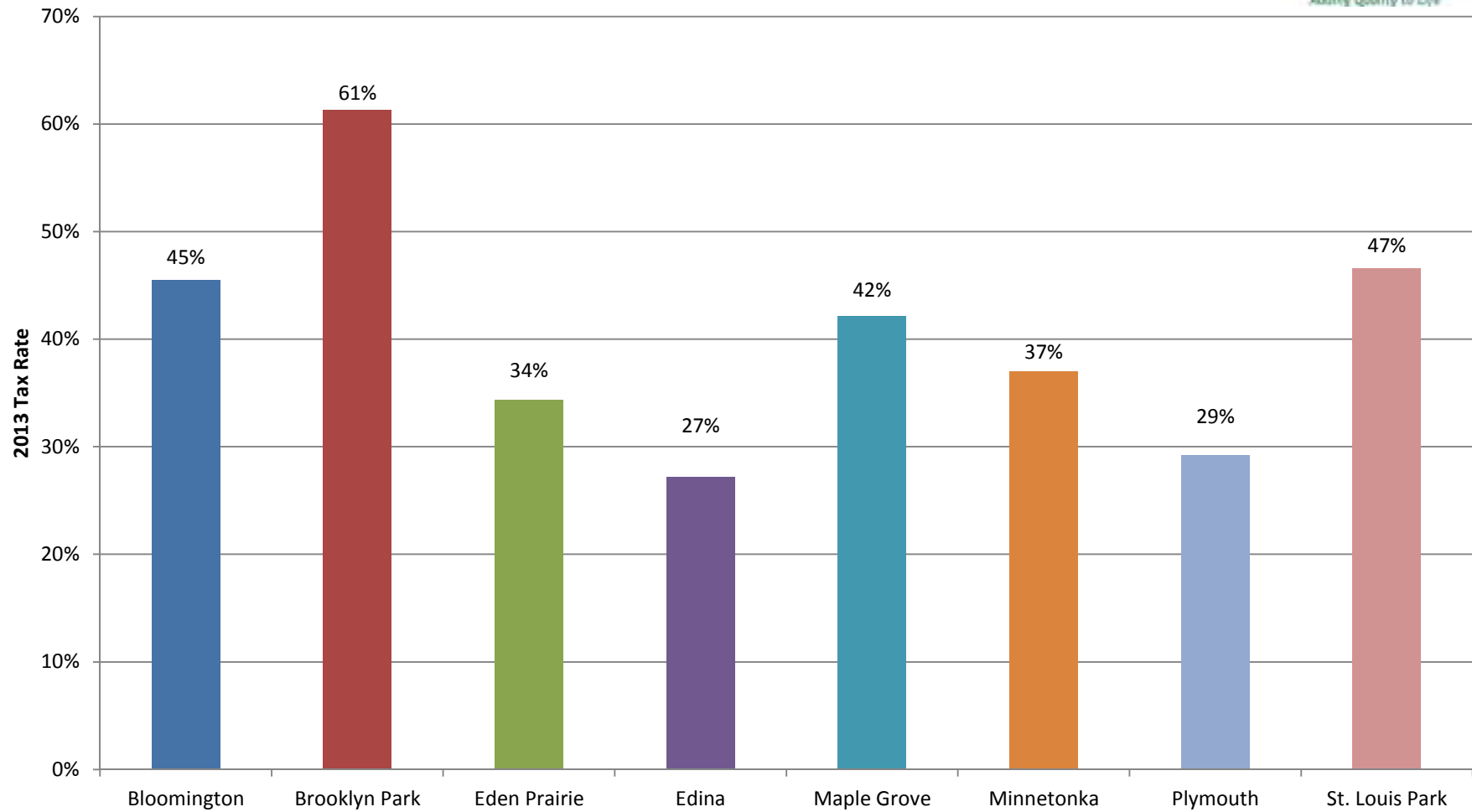


Does not include HRA levy

## Tax Rate History Hennepin Cities Over 45,000

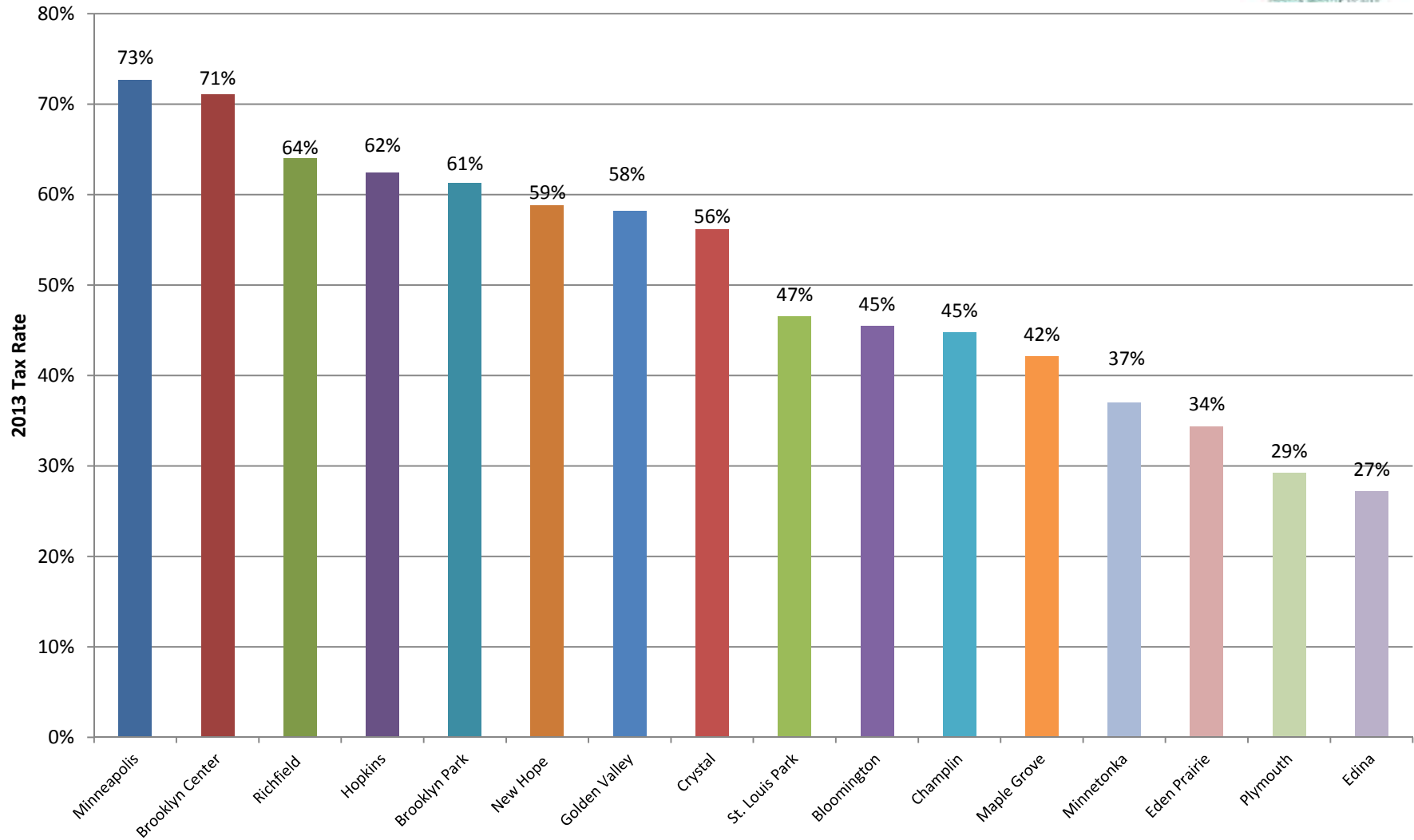


## Tax Rate Comparisons Hennepin Suburbs over 45,000



Average = 38.144%

## Tax Rate Comparison Hennepin Cities over 10,000



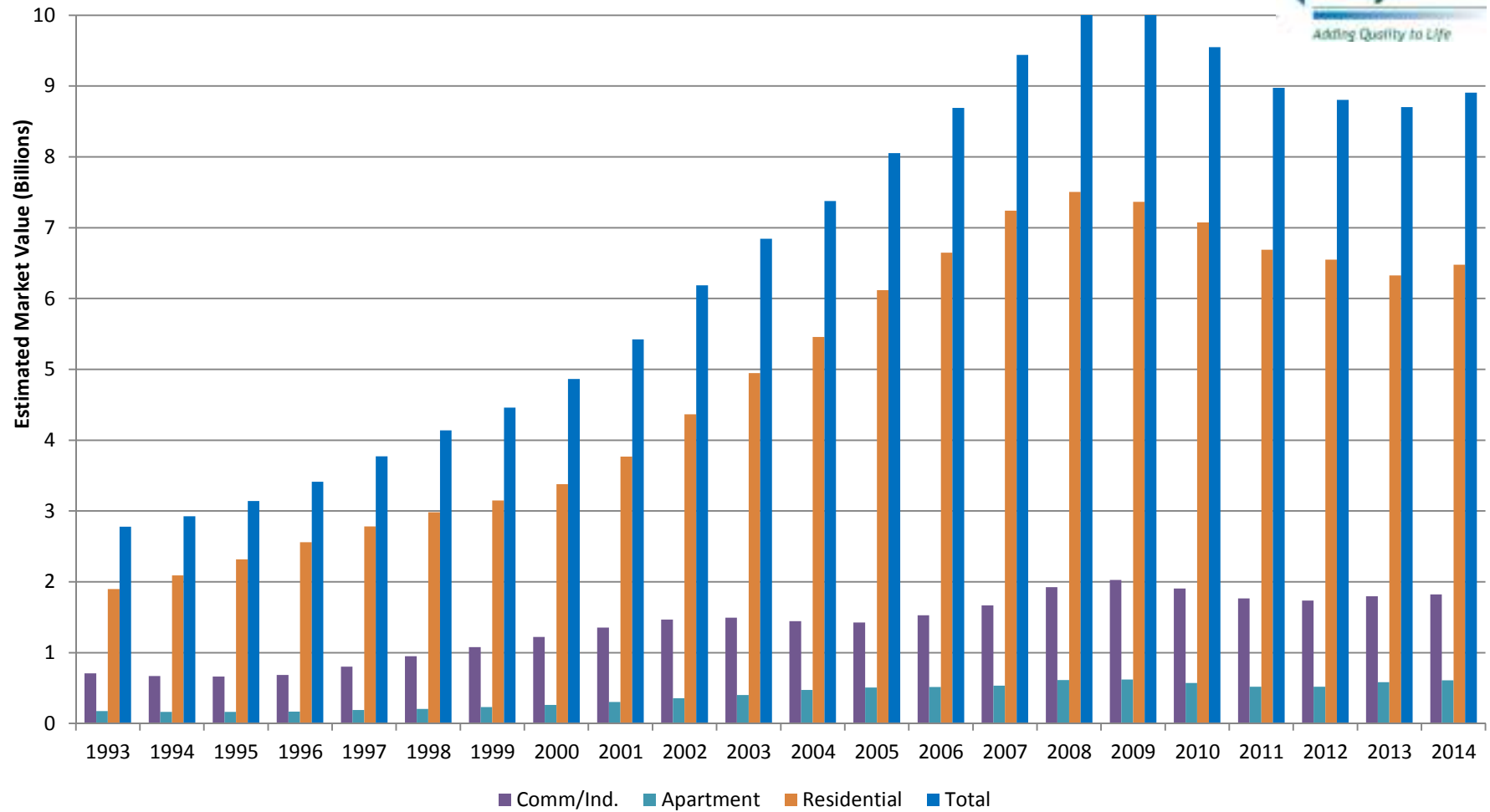
Average = 47.79%



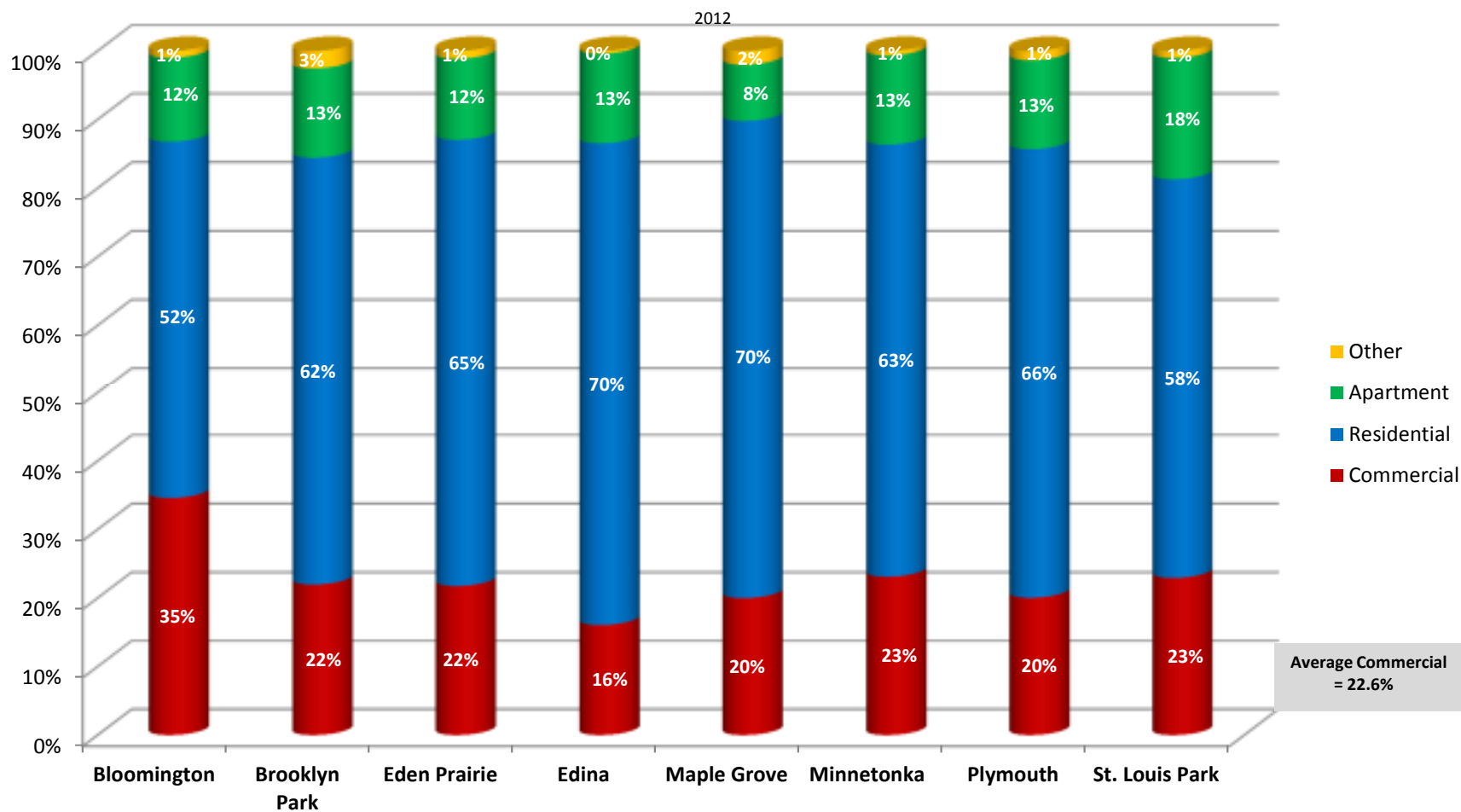
Hennepin Cities over 10,000 Population	2013 Tax Rate	City Taxes on \$250k Homestead	City Taxes on \$1M Business
Minneapolis	72.72%	1,711	13,998
Brooklyn Center	71.07%	1,672	13,682
Richfield	64.06%	1,507	12,332
Hopkins	62.42%	1,468	12,015
Brooklyn Park	61.31%	1,442	11,802
New Hope	58.81%	1,384	11,321
Golden Valley	58.20%	1,369	11,204
Crystal	56.15%	1,321	10,809
St. Louis Park	46.55%	1,095	8,961
Bloomington	45.49%	1,070	8,756
Champlin	44.77%	1,053	8,619
Maple Grove	42.14%	991	8,112
Minnetonka	37.00%	870	7,122
Eden Prairie	34.40%	809	6,621
<b>Plymouth</b>	<b>29.24%</b>	<b>688</b>	<b>5,629</b>
Edina	27.22%	640	5,239
<b>Average</b>	<b>50.72%</b>	<b>1,193</b>	<b>9,764</b>
Difference Plymouth to Average		(384)	(3,143)
Difference Plymouth to Highest		(1,023)	(8,369)



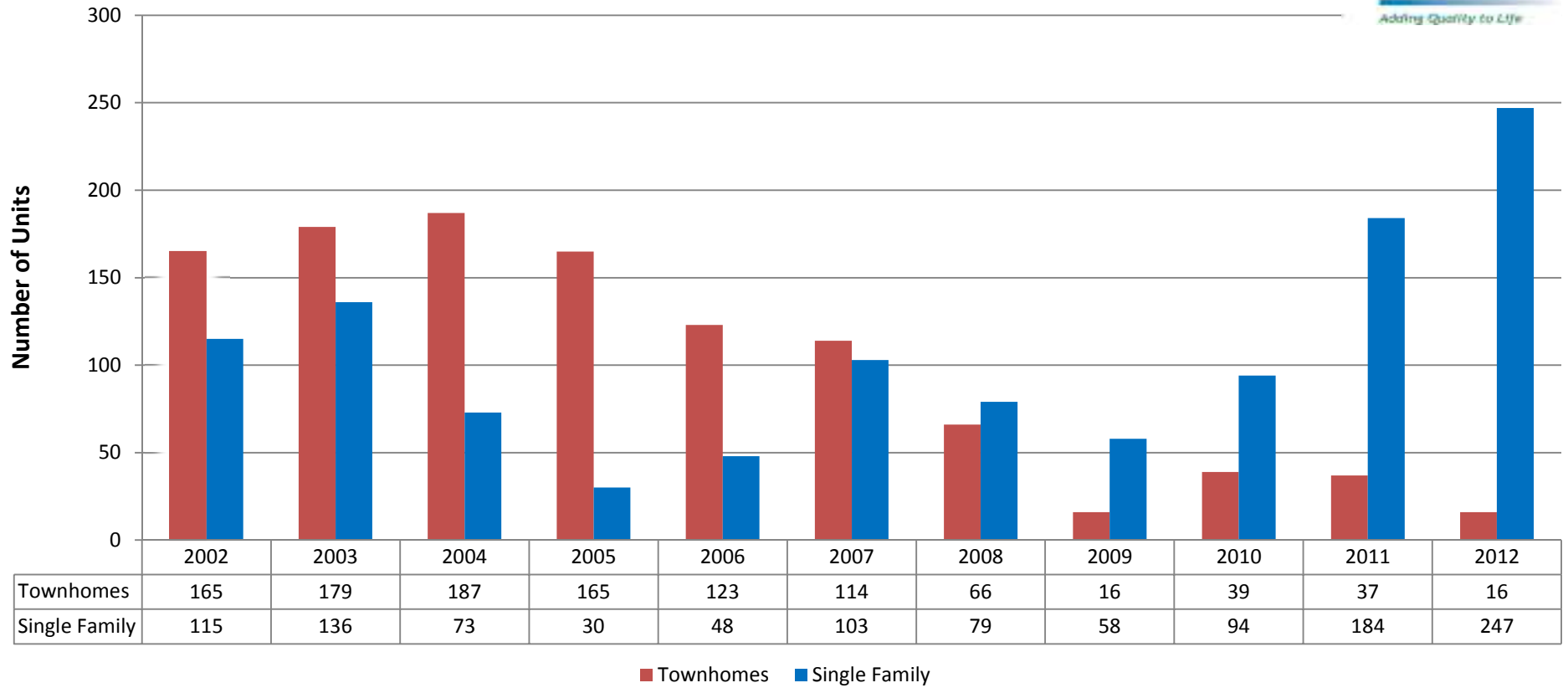
## Market Value History



## Tax Base Composition



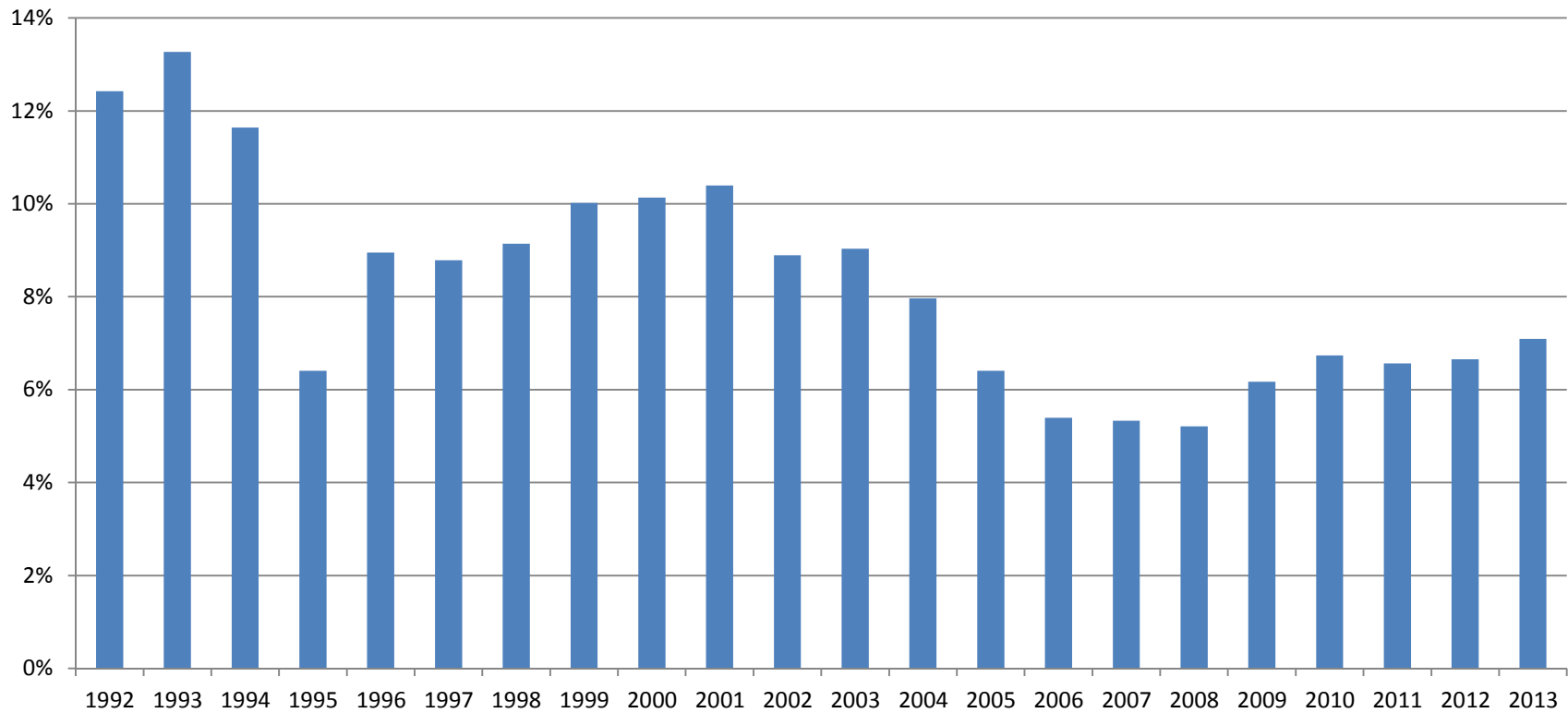
## Single Family Homes/Townhomes



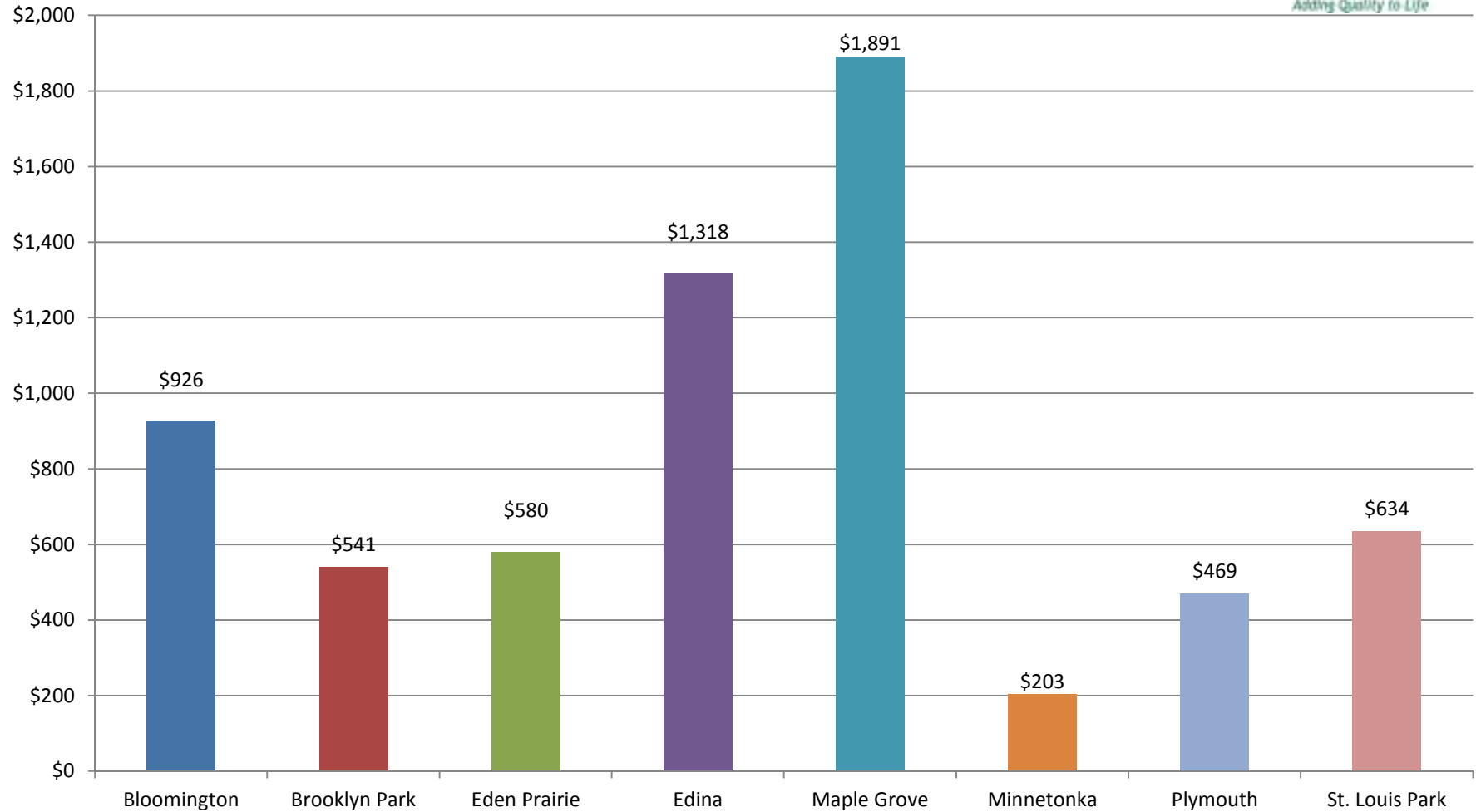
## Average Values for New Homes



**Net Tax Base  
Lost to Fiscal Disparities**



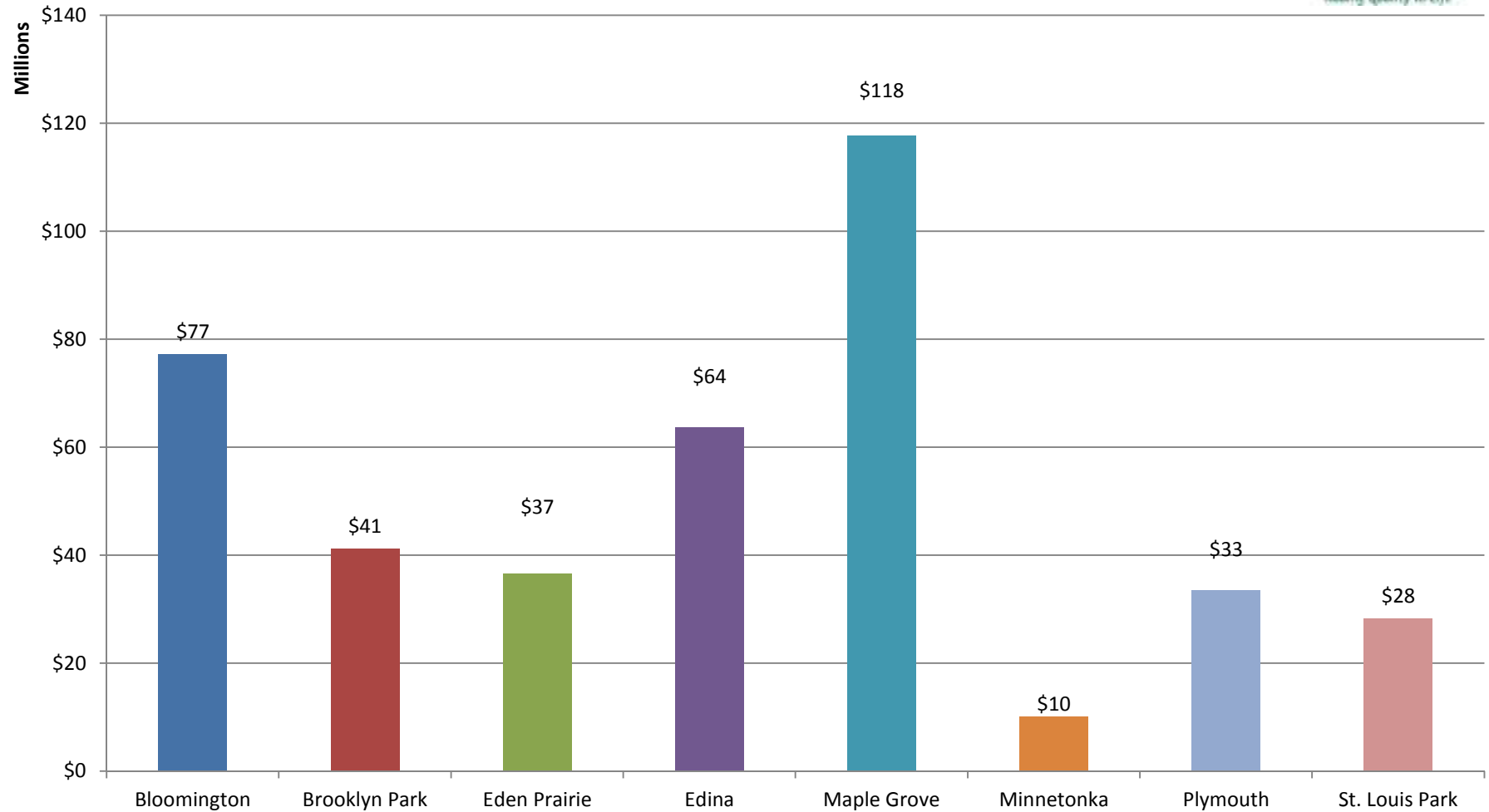
## Direct Net Debt Per Capita City portion only



Source: Moody's 2011

Average = \$820

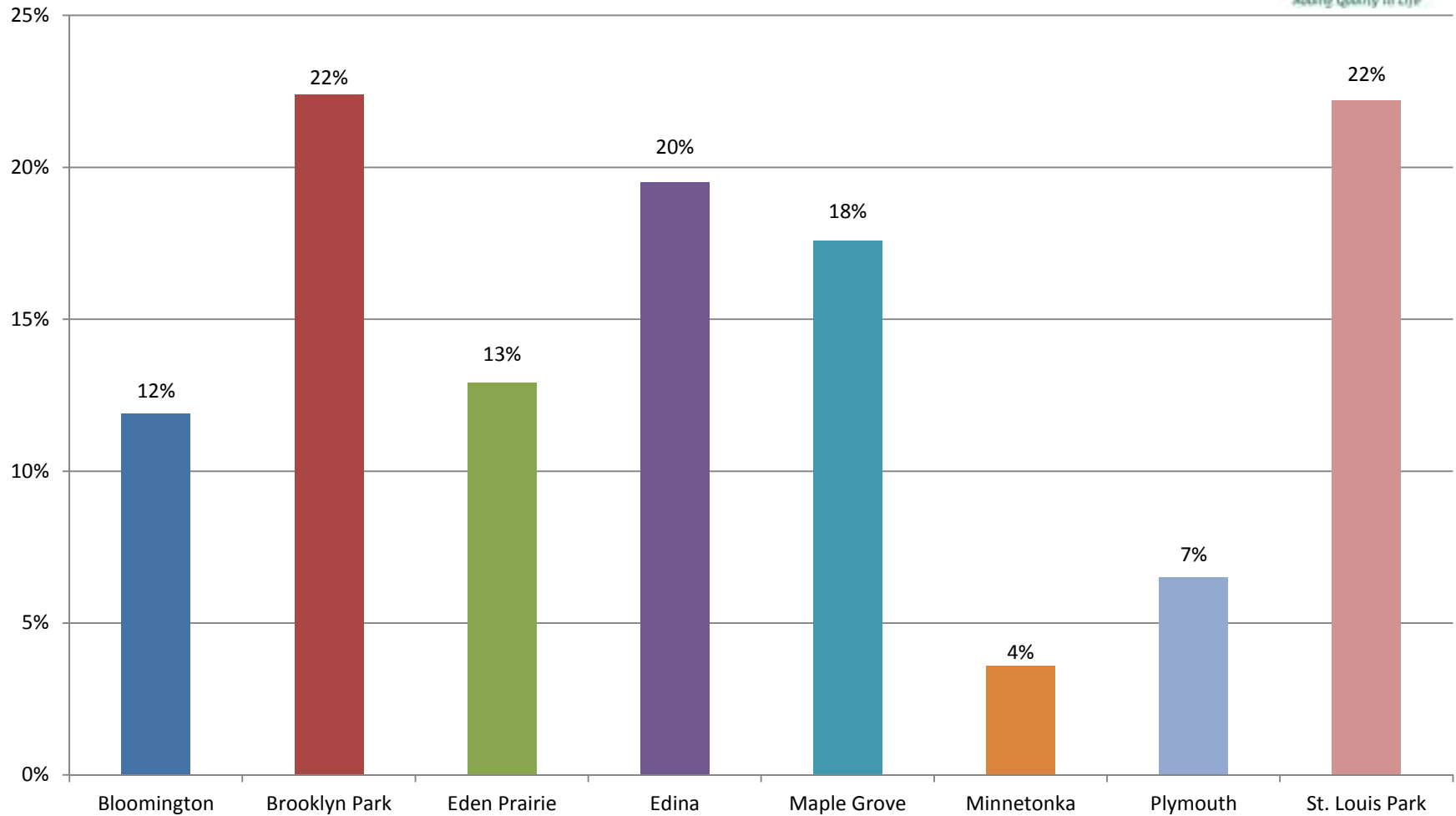
## Direct Net Debt Outstanding City portion only



Source: Moody's 2011

Average = \$51 million

# Debt Service as % of Operating Expenses City portion only

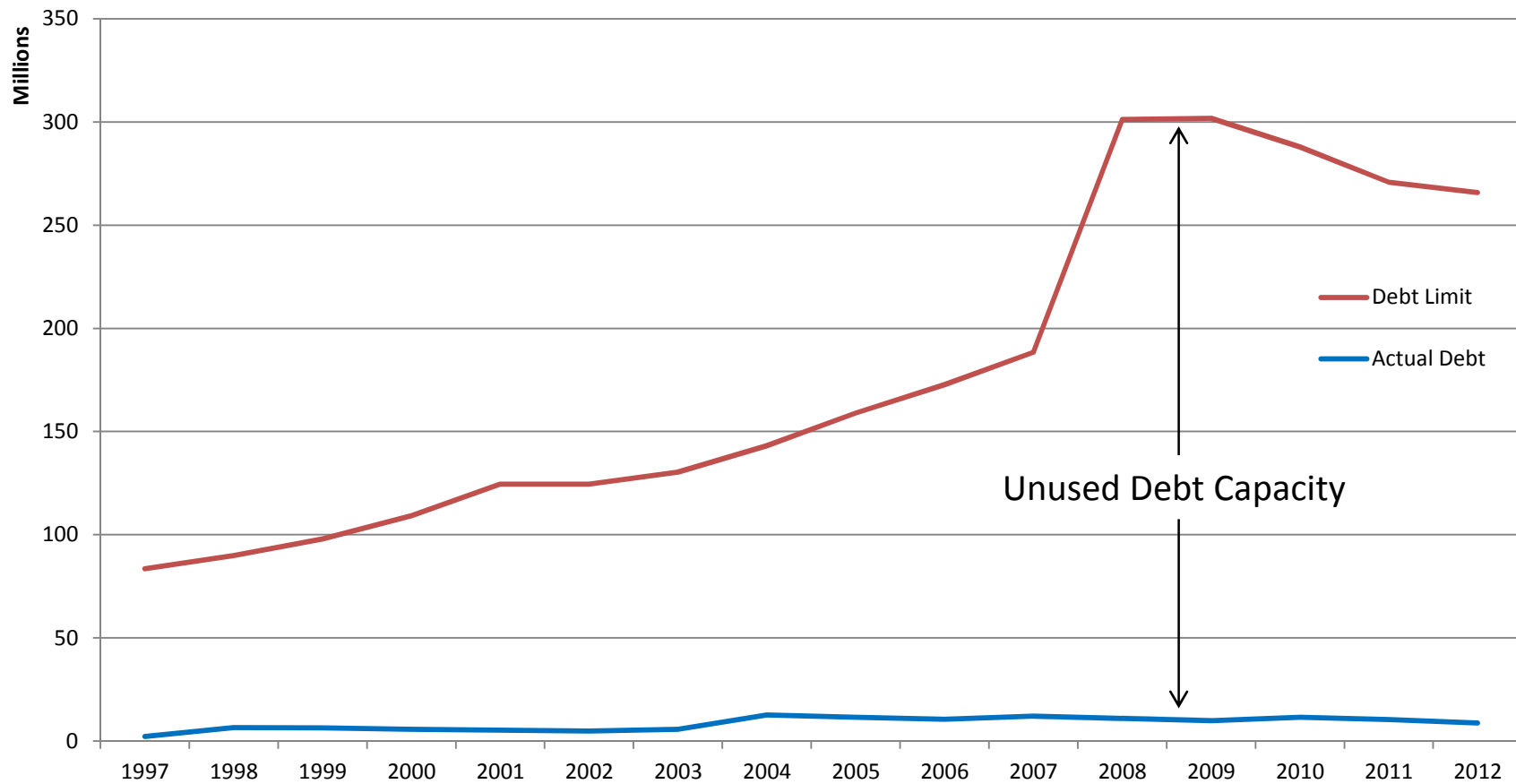


Source: Moody's 2011

Average = 15%



## Statutory Debt Limit Versus Actual Debt



\* In 2008, State Statute was changed from 2% to 3% of taxable market value

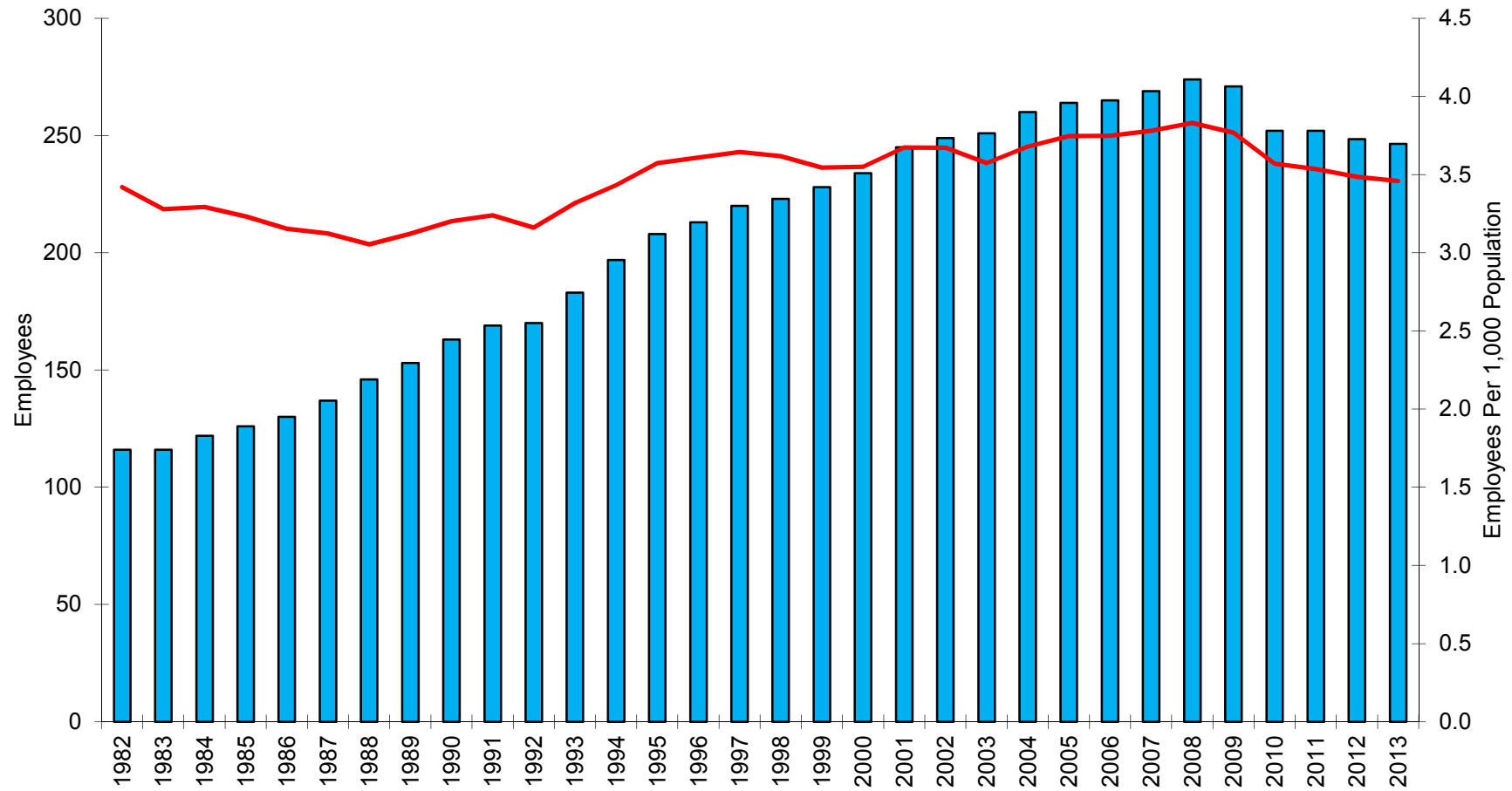
**TAX INCREMENT PROPERTY TAX DATA  
TAXES PAYABLE 2012**



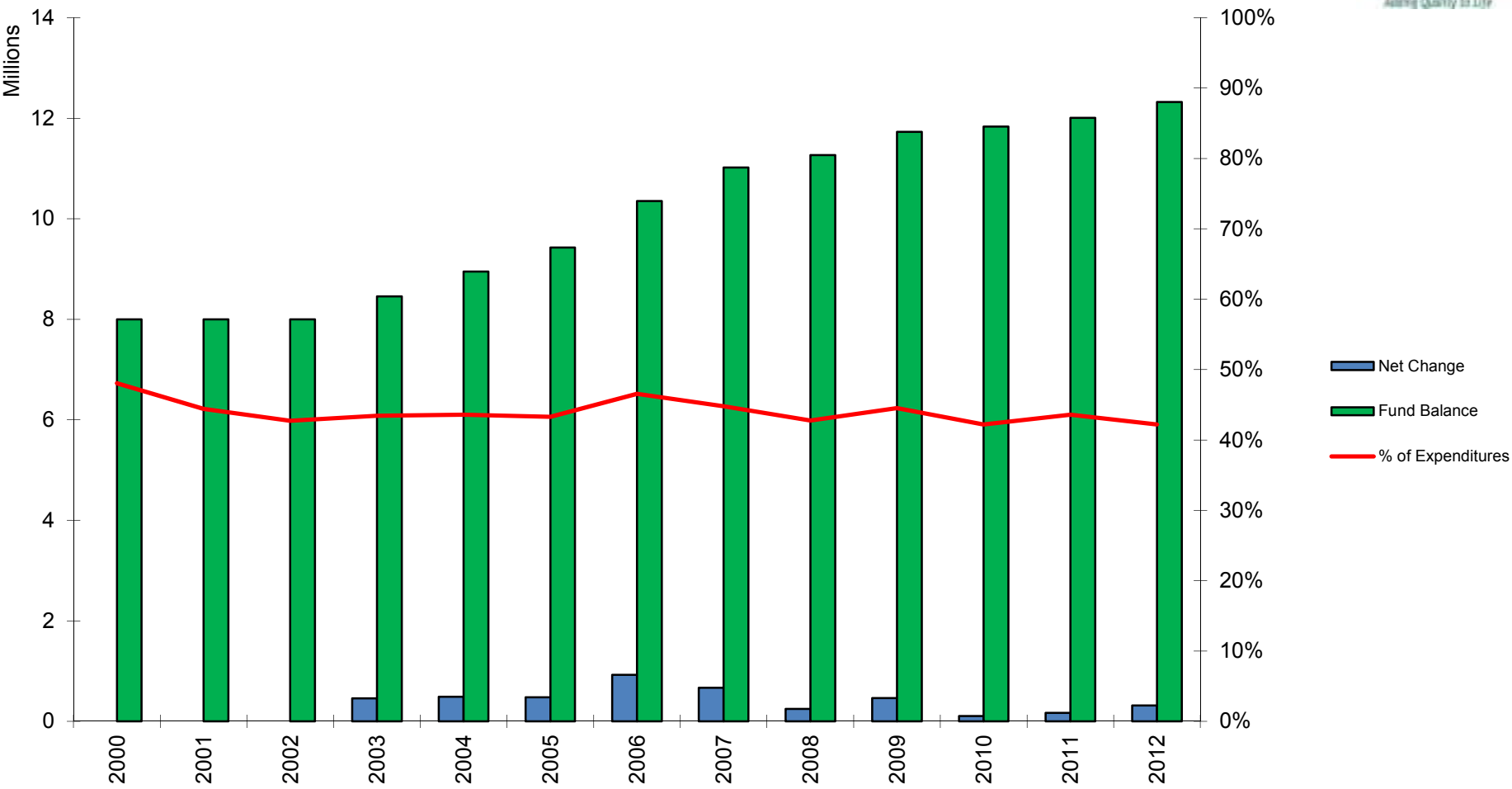
	NUMBER OF DISTRICTS	TAX CAPACITY VALUE			TAX INCREMENT TAX		
		TOTAL TAX CAPACITY	CAPTURED VALUE	CAPTURED/ TOTAL	GROSS	EXCESS	NET
<b>HENNEPIN COUNTY</b>							
OSSEO CITY OF	11	\$2,595,761	\$506,117	19.50%	\$743,054	\$71,438	\$671,616
CHAMPLIN CITY OF	5	\$18,286,284	\$2,658,362	14.54%	\$3,296,768	\$417,374	\$2,879,394
RICHFIELD CITY OF	10	\$30,257,620	\$3,911,512	12.93%	\$5,856,648	\$181,764	\$5,674,884
BROOKLYN CENTER CITY OF	3	\$18,668,118	\$1,922,253	10.30%	\$3,084,433	\$242,919	\$2,841,514
MINNEAPOLIS CITY OF	102	\$406,976,849	\$36,037,843	8.86%	\$55,128,156	\$3,512,435	\$51,615,721
GOLDEN VALLEY CITY OF	2	\$36,799,260	\$3,242,617	8.81%	\$4,651,307	\$7,027	\$4,644,280
ST LOUIS PARK CITY OF	15	\$63,092,802	\$5,426,995	8.60%	\$7,093,370	\$618,018	\$6,475,352
HOPKINS CITY OF	6	\$19,703,482	\$1,657,484	8.41%	\$2,459,160	\$118,153	\$2,341,007
WAYZATA CITY OF	3	\$18,984,939	\$1,509,594	7.95%	\$1,646,333	\$0	\$1,646,333
BLOOMINGTON CITY OF	13	\$131,911,543	\$8,816,925	6.68%	\$11,031,559	\$292,905	\$10,738,654
NEW HOPE CITY OF	10	\$16,851,982	\$944,560	5.61%	\$1,376,343	\$33,420	\$1,342,923
EDINA CITY OF	2	\$109,012,566	\$3,917,958	3.59%	\$4,466,174	\$0	\$4,466,174
MOUND CITY OF	3	\$10,972,410	\$370,849	3.38%	\$468,093	\$11,177	\$456,916
BROOKLYN PARK CITY OF	8	\$58,797,178	\$1,950,166	3.32%	\$2,743,441	\$59,098	\$2,684,343
ROBBINSDALE CITY OF	10	\$8,966,302	\$290,929	3.24%	\$409,870	\$59,955	\$349,915
CORCORAN CITY OF	1	\$7,137,207	\$217,416	3.05%	\$287,448	\$0	\$287,448
MEDINA CITY OF	1	\$15,095,343	\$416,626	2.76%	\$428,350	\$43,524	\$384,826
SPRING PARK CITY OF	2	\$2,604,759	\$71,338	2.74%	\$82,459	\$5,739	\$76,720
LONG LAKE CITY OF	2	\$2,711,854	\$73,690	2.72%	\$91,218	\$6,025	\$85,193
EDEN PRAIRIE CITY OF	10	\$106,411,836	\$2,860,791	2.69%	\$3,481,101	\$115,420	\$3,365,681
EXCELSIOR CITY OF	1	\$4,111,332	\$89,863	2.19%	\$105,982	\$5,140	\$100,842
GREENFIELD CITY OF	1	\$4,166,235	\$90,652	2.18%	\$117,199	\$0	\$117,199
LORETTO CITY OF	1	\$616,345	\$13,051	2.12%	\$17,850	\$317	\$17,533
CRYSTAL CITY OF	5	\$14,768,222	\$311,869	2.11%	\$448,902	\$60,859	\$388,043
ROGERS CITY OF	4	\$13,802,522	\$252,049	1.83%	\$360,123	\$14,425	\$345,698
MINNETONKA CITY OF	4	\$94,445,826	\$1,657,138	1.75%	\$2,048,858	\$36,163	\$2,012,695
DAYTON CITY OF *	2	\$5,370,438	\$68,763	1.28%	\$95,071	\$8,410	\$86,661
MAPLE GROVE CITY OF	5	\$86,497,634	\$974,404	1.13%	\$1,191,936	\$0	\$1,191,936
<b>PLYMOUTH CITY OF</b>	<b>8</b>	<b>\$105,039,603</b>	<b>\$942,313</b>	<b>0.90%</b>	<b>\$1,080,528</b>	<b>\$43,292</b>	<b>\$1,037,236</b>
ORONO CITY OF	1	\$29,202,070	\$54,813	0.19%	\$52,446	\$0	\$52,446
<b>COUNTY TOTAL</b>	<b>251</b>	<b>\$1,443,858,322</b>	<b>\$81,258,940</b>	<b>5.63%</b>	<b>\$114,344,180</b>	<b>\$5,964,997</b>	<b>\$108,379,183</b>
 <b>STATE TOTAL</b>	 <b>1,570</b>	 <b>\$3,870,392,818</b>	 <b>\$190,812,915</b>	 <b>4.93%</b>	 <b>\$256,478,412</b>	 <b>\$20,192,156</b>	 <b>\$236,286,256</b>

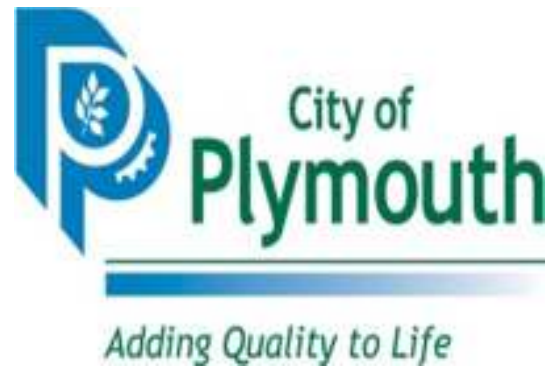
# City of Plymouth Employees Per 1,000 Population

Employees FTE Per 1,000 Population



# City of Plymouth General Fund Balance History





STANDARD  
& POOR'S

Aaa

AAA